

Multi-Angle Auto-Indexing Milling Head

Model: VGCI-6000-HS

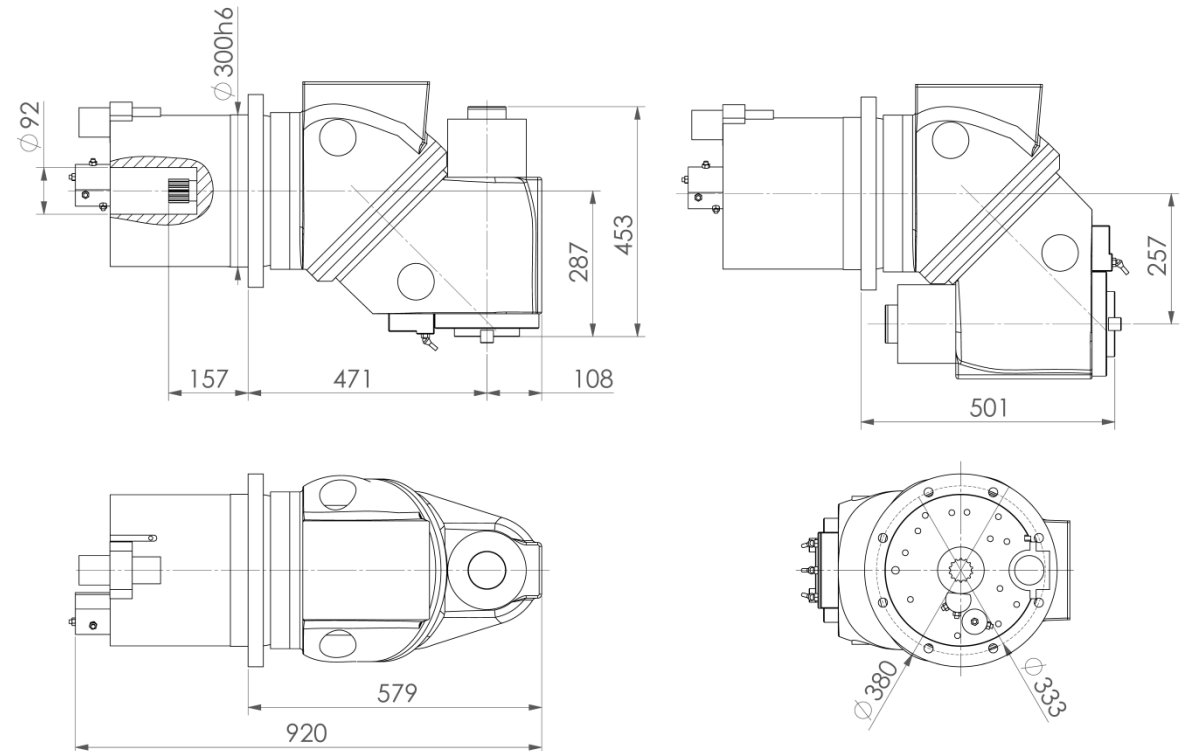


Technical Data:

Maximum transmissible power	25,7 kW
Maximum transmissible torque	1.370 Nm
Maximum speed	S1/S6: 5.000/6.000 rpm (by bearings cooling)
Indexing of the axis	A axis: Every 1° (by Hirth coupling) C axis: Every 1° (by Hirth coupling)
Axis swivel range	A axis: Unlimited C axis: ±180°
Bodies clamping force	A axis 8.000 kg C axis 10.000 kg
Tool clamping force	14,7 kN (hydromechanic)
Tool taper	ISO 50 - DIN 69871 (or others)
Pull-stud	DIN 69872 (or others)
Bevel gears	Klingelnberg type, ground
Spindle's front seal	Labyrinth seal
External tool cooling	Yes, 3 coolant pipes
Taper air jet	Yes
Bearings cooling	Provided with inputs for bearings cooling
Bearings lubrication	Greased for life
Bevel gears lubrication	Ready for automatic greasing
Weight	500 kg



General Dimensions



Optionally:

Internal tool cooling, form AD, with rotary joint.

Temperature sensor.

Possibility to fit to different machines, including machines with pick-up interface.